

THE REPORTING MODULES

The REPORTING modules are part of our ADD-ON modules, designed to complement and further enhance XQUIS Human Capital Management System core functionalities. All ADD-ON modules are of the same design and architecture as the main modules, capable of full integration and link within the whole System Suite without any difficulties or hassles, and are also dynamic, continue to be developed and updated to meet ever-changing customer demand.

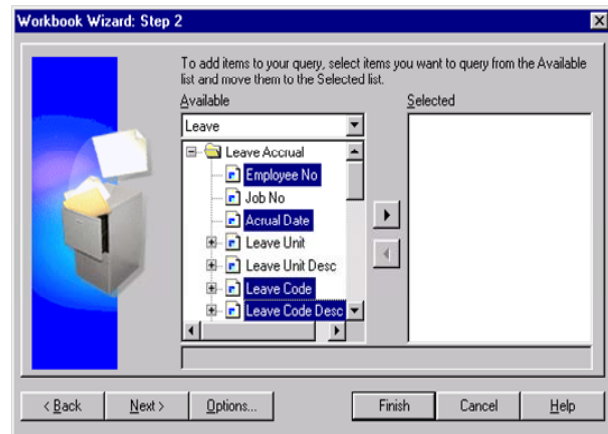
EMPLOYEE SELF SERVICE

The Managers' Information Kiosk and Employee Self-Service allows line-managers and staff to have instant, user friendly access to data and information without the need for direct user-access. Using data-warehousing techniques, selected data for staff is downloaded to a central file area, from where it may be disseminated to dedicated or Managers' PC's as a standalone application on a user defined, periodic basis on a 'need-to-know' base. Staff and Managers have the flexibility and convenience of instant access to data and many other reports i.e. such as Personnel details, including address, date of birth, emergency contacts etc. The Self Service feature can be loaded onto, i.e. a notebook computer - ideal for remote data access in site visits.

META LAYER REPORT GENERATOR

Meta Layer Report Generator is a desktop tool which facilitates fast, effective and user friendly retrieval of data from all of XQUIS Human Capital Management System modules, which is then stored in a "Meta Layer" or data cube. It

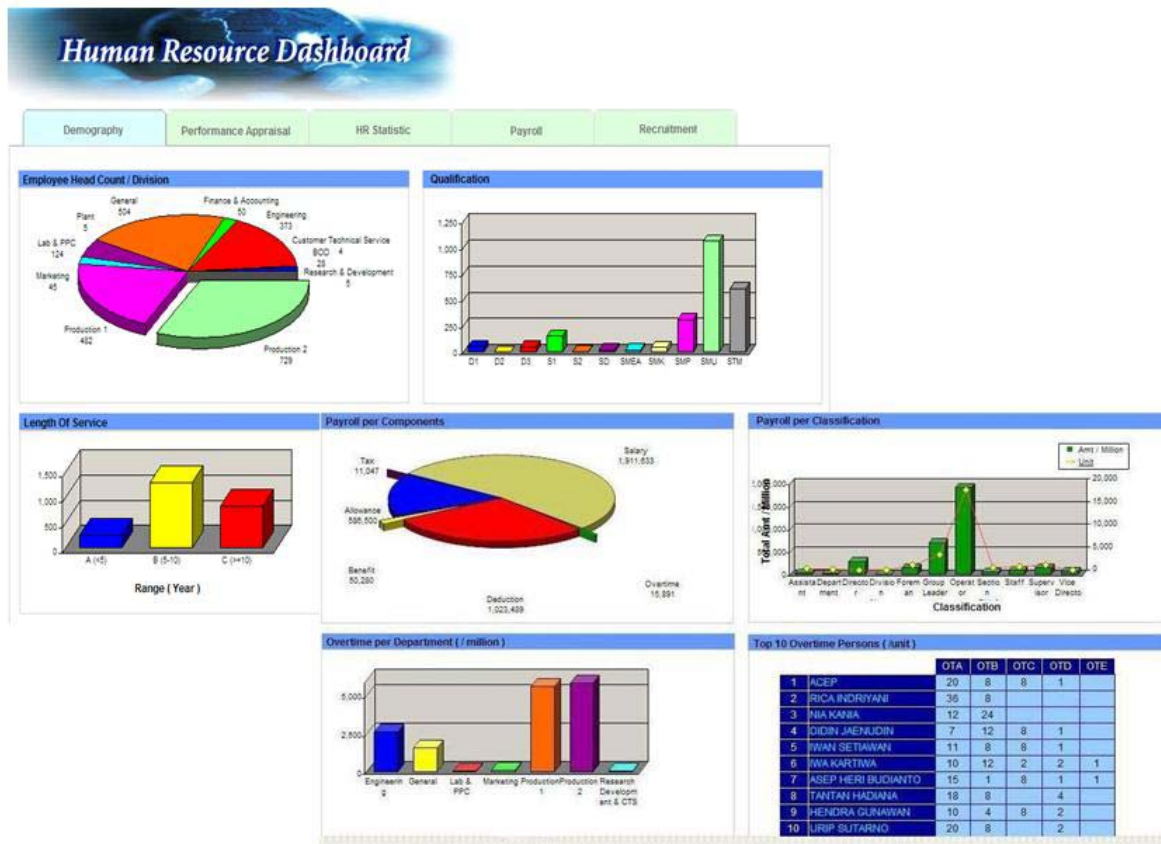
allows three-dimensional graphic or analyzed through spreadsheet program on the desk top, and also provide an extensive "drill-down" capability and multi-dimensional graphics enabling the authorized users to view their snap-shot data at either a global or subjective level, to identify trends and gaps and compare results from one data group to another by "cutting and slicing" through the data-cube.



The Reporting query screen

EXECUTIVE INFORMATION SYSTEM

The XQUIS Human Capital Management System Executive Information System module offers point and click ease of use and combination of text, data through a common information front end, enabling a common employee access. It brings together information from sources from within and outside the human resource and organization area. The layouts and topics are fully user definable and user-maintainable.



Executive Information System Screen